



EXCEL (PE100) **LARGE DIAMETER PIPE SYSTEMS**

Innovation in polyethylene pipe systems for water, gas and other applications





Cost effective large diameter installations

GPS Excel (PE100) Pipe Systems offer all the major advantages of polyethylene allowing considerably lower installation and whole life costs when compared to traditional pipeline materials. GPS can offer advice to pipeline designers to help them specify the most cost efficient and optimised pipe configuration possible. Our tailor-made solutions can reduce costs even further by varying the diameters and wall thickness (SDR), as well as offering custom lengths to enable most efficient delivery and installation.

Homogeneous pipeline with fewer joints means less leakage

A large diameter polyethylene pipe and fittings system enables the installation of a fully welded pipeline that does not require thrust blocks or anchored joints which are needed by other systems. The pipe's flexibility makes it easy to follow natural contours and its tolerance to ground movement and heave makes the pipeline extremely resilient.

Lighter weight for reduced logistical costs and easier handling

Polyethylene pipes and fittings are lighter in weight than other pipeline materials. This enables delivery in much longer pipe lengths (potentially up to 18 metres) and more economic load quantities, reducing overall costs and lessening disruption around site.

Long system life (typically 100 years) with minimum maintenance

Polyethylene pipe does not corrode and is very chemically inert. A fifty-year design life is factored into pressure ratings and whole-life costs, but in reality and with the latest polyethylene polymers, the expected life is likely to be well in excess of 100 years.

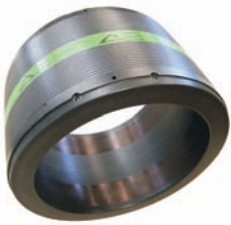


Features & Benefits

- Great flexibility, allowing the pipe to follow varying terrains and avoid obstacles with reduced need for fittings. Insensitive to ground movement and heave.
- Large PE fittings are designed to be as strong as the pipe and maintain integrity of the fully welded pipe system.
- Fully welded pipeline possible.
- Tolerant of surge and fatigue to at least twice the pressure rating of the pipe.
- Retains ideal hydraulic characteristics over the life of the system.
- Exceptionally smooth, non-porous bore gives better flow capacity comparing with ductile iron.
- Proven resistance to corrosion and chemicals.
- System advice and training can be provided.
- Available on Blue and Black PE100 in sizes up to 1200mm OD.

Comprehensive range of large diameter fittings

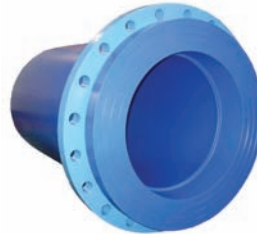
In addition to Electrofusion Couplers and Branch Saddles, GPS offer an extensive range of large fabricated pipped polyethylene fittings to enable on site butt fusion jointing. GPS also offer a full range of flanged fittings and we can fabricate bespoke fittings to suit the customer's requirements.



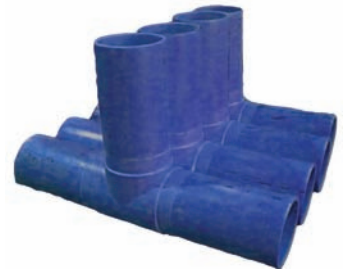
Large Diameter Electrofusion Couplers (up to 800mm)



Branch Saddles (up to 630mm)



Flanges



Large Diameter Equal Tees



Large Diameter Reduced Branch Tees



Formed Bends and Mitred Elbows



Reducers and End Caps



Flanged Branch Tees

Quality & Approvals

- Pipes are only manufactured in premium PE100 pipe grades, listed on the PE100+ Quality Materials List. These are exceptionally resistant to rapid crack propagation and long-term stress cracking.
- Manufactured under BS EN ISO 9001:2008 accredited Quality Management System, GPS products comply with relevant UK and Continental industry specifications.
- Regulation 31 (England and Wales) and Regulation 27 (Scotland) approved.
- Kitemarked to WIS 4-32-17.
- Complies with BS EN 12201 and BS EN 13244.



WIS 4-32-17
KM 508224

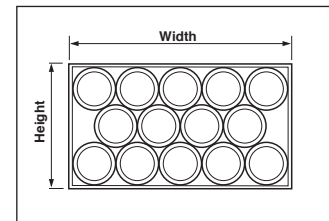


Pipe Product Codes and Descriptions

SDR	Size (mm)	Mean Bore (mm)	Mean Weight (kg/m)	Black 6M Straight	Black 12M Straight	Blue 6M Straight	Blue 12M Straight
11	630	512	101.6	40 512 329	40 527 329	41 512 329	41 527 329
	710	578	129.3	40 512 330	40 527 330	41 512 313	41 527 313
17	630	553	68.9	40 506 329	40 507 329	41 506 329	41 507 329
	710	625	87.5	40 506 330	40 507 330	41 506 330	41 507 330
	800	704	111.0	40 506 332	40 507 332	41 506 332	41 507 332
	900	792	140.4	40 506 333	40 507 333	41 506 333	41 507 333
	1000	880	173.5	40 506 334	40 507 334	41 506 334	41 507 334
21	630	569	56.4	40 519 329	40 539 329	40 519 329	41 539 329
	710	641	71.5	40 519 330	40 539 330	41 519 330	41 539 330
	800	722	90.6	40 519 332	40 539 332	41 519 332	41 539 332
	900	812	114.7	40 519 333	40 539 333	41 519 333	41 539 333
	1000	902	141.7	40 519 334	40 539 334	41 519 334	41 539 334
26	630	581	45.5	40 518 330	40 528 330	41 518 329	41 528 329
	710	655	57.8	40 518 330	40 528 330	41 518 330	41 528 330
	800	738	73.2	40 518 332	40 528 332	41 518 332	41 528 332
	900	830	93.0	40 518 333	40 528 333	41 518 333	41 528 333
	1000	922	114.2	40 518 334	40 528 334	41 518 334	41 528 334
	1200	1106	165.0	40 518 335	40 528 335	41 518 334	41 528 335

Dimensions

Size (mm)	Length	No/ Bundle	Width (mm)	Height (mm)	Approx Weight			
					SDR11 (kg)	SDR17 (kg)	SDR21 (kg)	SDR26 (kg)
630	6	2	1260	740	1241	845	690	563
	12	2	1260	740	2476	1686	1376	1122
710	6	2	1420	820	1551	1070	874	714
	12	2	1420	820	3103	2135	1743	1422
800	12	1	800	800		1338	1086	883
900	12	1	900	900		1704	1390	1135
1000	12	1	1000	1000		2104	1715	1393
1200	12	1	1200	1200				1986



Other sizes, SDRs and straight lengths may be available – Please contact our Sales office for further information.

GPS PE Pipe Systems reserve the right to modify products without prior notice, as part of its programme of continuous improvement. The content of this publication is for general information only and it remains the users responsibility to determine the suitability of any product contained therein for the intended application. Whilst every effort is taken to ensure the accuracy of the information contained within the brochure, the details are offered in good faith and GPS PE Pipe Systems accepts no liability for matters arising as a result of errors and/or omissions. The product range displayed in this catalogue does not automatically indicate stock availability. Please contact our Sales Office for specific details.

A PDF version of this brochure is available from our website at www.gpsuk.com Reproduction of this publication, or any part, is not permitted without the written consent of GPS PE Pipe Systems. Please contact our Marketing Communications via enquiries@gpsuk.com or Tel: +44 (0)1480 442623 for further information. GPS PE Pipe Systems is a trade name of Glynwed Pipe Systems Ltd. Company Number 1698059.

GPS
PE PIPE SYSTEMS

email: enquiries@gpsuk.com
web: www.gpsuk.com

St Peter's Road
Huntingdon
Cambridgeshire
PE29 7DA
Tel: +44 (0)1480 52121
Fax: +44 (0)1480 458829

G0020 February 2010

an *Aliaxis* company